



Sri Lankan Engineers in South Australia

ANNUAL REPORT

2019

Sri Lankan Engineers in South Australia



**The launch of SLESA for Sri Lankan Engineering Community
in South Australia.**

Table of Contents

About SLESA	1
Our mission.....	1
Our objectives	1
Messages	2
From President	2
From Secretary	3
From The Council	4
Constitution	5
Membership selection criteria	5
Governing body of SLESA	5
Our team - The Council	6
Flashback of our first year 2019	8
Social events	8
Student engagement	9
Plan for 2020 and beyond	10
Our Members	11
Members	11
Student members	12

About SLESA

Sri Lankan Engineers in South Australia, SLESA in short, is formed and launched on Saturday the 01st September 2018 with the broader vision;

“To provide a venue for Sri Lankan Engineers in South Australia to foster professionalism and camaraderie”

The main emphasis is given to the three significant elements, “Sri Lanka”, “South Australia” and “Engineer” by providing a broader and clear definitions within the context of SLESA to expand the membership base of the association, as such SLESA is the place for all the Sri Lankan Engineers who found South Australia the home or transiting for academic or professional commitments. We are proud to mention that we are currently having a membership base of 82 including student members.

Since the launch, we have gone through our very first year packed with excitements and challenges, ironing out the rules for SLESA including the vision, mission and objectives, but most importantly not keeping our members unattended. With our committed council members, we worked in parallel by keeping our members engaged with social events and also providing professional services through student engagement.

Currently in pending registration as an incorporated association under the Associations Incorporated Act 1985, SLESA is envisioned to be an incorporated association and create a vibrant and conducive environment in South Australia where the platform is formed to help each other in the Engineering community and beyond.

Our mission

Create a vibrant and conducive environment by, providing moral, mentoring and professional development supports, facilitating opportunities for networking and sharing success with social gatherings, for the Sri Lankan engineering community in South Australia.

Our objectives

1. Provide mentoring and moral support for the Sri Lankan engineering community in South Australia focusing mainly on engineering students and newly arrived engineers to the State
2. Organise professional development programs and work placement opportunities
3. Create opportunities and provide resources for Sri Lankan Engineers in South Australia to meet, network, socialise and share knowledge
4. Organise general social gatherings and events for fund-raising to support the worthy charitable deeds in South Australia and Sri Lanka
5. Promote Sri Lankan engineering excellence among peers

Message

From President



Dear Fellow Engineers

As the founding member of the Sri Lankan Engineers in South Australia (SLESA) organisation, I am privileged to address you all through the first Annual Report of SLESA.

The work of engineers is witnessed throughout history. This is apparent in the vibrant history of Sri Lanka, which includes the world famous irrigation systems with the large reservoirs like Parakrama Samudraya, impressive irrigation & urban planning of Sigiriya and the ancient stupas; the largest brick structures in the world. Therefore, without a doubt it is safe to say that engineering runs in our blood as Sri Lankans.

Whilst living in Adelaide I came to realise the lack of social networking opportunities for engineers in South Australia. After a friendly discussion with a fellow engineer, we began to initiate gatherings with likeminded engineers. The foundation of the SLESA Organization started from that small group of individuals which has since grown into a bigger body of people.

We had a very fruitful past year at SLESA and achieved some of the key objectives of SLESA. We were also able to successfully finalise the constitution. The “Family Get-together” in 2019 was a very enjoyable event and gave the opportunity for Sri Lankan Engineers and their families living in South Australia to meet as one group for the very first time. We were also able to support a few engineering students to complete their undergraduate training.

I am truly grateful to all council members for their commitment and dedication throughout the past year. Since 2018, by binding together as a single force the working council members were able to pursue and build this organization. I also would like to take this opportunity to thank all members of SLESA, other volunteers & organisations which have supported us in numerous ways.

In the future I hope the achievements of SLESA are the results and combined effort of each individual member that is a part of it. Therefore, I invite all Sri Lankan engineers living in South Australia to join hands together with SLESA.

Eng. Ajith Juwan
President

Message

From Secretary



I am pleased to write this note as the founding secretary of the SLESA. We have made impressive progress and accomplished our objectives since the launch. We incorporated engineering students to our organization and provided opportunities to network with engineering professionals. SLESA organized sessions to welcome newly arrived students and has successfully secured industrial training places at prestigious engineering organizations in SA for the students in need. We have provided mentoring and moral support for the Sri Lankan engineering students and newly arrived engineers to the state. I am proud to say, we have a solid governing body, The Council, which is in the right spirit to guide SLESA. I take this opportunity to thank the council members for their commitment and wonderful contribution since the start.

I welcome all the members and their families to this wonderful gathering and request you to make the best out of it.

I thank each one of you who have contributed to the success of this event and looking forward to working with you all.

Subash Kodituwakku
Secretary

Message

From The Council



On behalf of The council of SLESA, I extend a warm welcome to everyone.

It's been a privilege to be a part of The Council for the past year. As the SLESA council, we've made good progress over the year and managed to host a very successful family get together as a starting point to this association in 2019. Also, we have been able to offer numerous placement opportunities in the industry to our young budding engineers.

The significant efforts of 2019 council members in preparation of SLESA "constitution" has allowed the freedom of the next council to focus on strengthening and building the association.

We would love to extend our heartiest wishes to the upcoming council to take the baton and bring this association to a greater heights in the years to come. Once again we would like to welcome all the members of SLESA and their family members to the family get together 2020 and we hope you will enjoy the day.

Chrishanthi Weerawarna
On behalf of The Council

Constitution

The constitution was the main focus of The Council during our first year. The outgoing council must be proud to leave the well documented set of rules as a solid base for the future of SLESA.

The constitution and associated by-laws are providing the basic guidelines for the proper functioning and delivering services in accordance with our vision, mission and objectives, also the proper operation in compliance with the Associations Incorporated Act 1985.

The vision, mission and objectives were well thought through along with the findings from the brainstorming session held at the launch and aligned to provide a conducive environment where SLESA members could get together and share knowledge and professional conduct while helping our community and beyond.

The other main highlights of the constitution:

- Membership selection criteria
- The governing body of SLESA

Membership selection criteria

The membership of SLESA is divided into two categories: Member and Student Member.

Educational Qualification for Members

- A four-year full-time BSc Engineering or BEng degree, accredited by the Institution of Engineers Sri Lanka (IESL), from a University or
- A four-year (or more) full-time BSc Engineering or BEng degree, accredited by Engineers Australia under Professional Engineer category, from a University or
- An associate or a superior membership from IESL or
- A graduate or superior membership in Professional Engineer category from Engineers Australia or
- A four-year (or more) full-time BSc Engineering or BEng degree from any international University and Engineers Australia has assessed and certified that the person is eligible for a graduate or a superior membership in Professional Engineer category

Educational Qualification for Student Members

An undergraduate of a four-year (or more) full-time BSc Engineering or BEng degree program, accredited by the Engineers Australia under Professional Engineer category, from a University.

Governing body of SLESA

All the affairs of SLESA are managed and governed by the body called “The Council” which consists of 11 members, six of them are co-opted while the rest are nominated and elected by the members before the AGM. The term of The Council is one calendar year.

There are five executive members, President, Secretary, Treasurer, Vice President and Assistant Secretary. The Council is empowered for the appointment of the executive members at the first council meeting after the AGM.

Our Team - The Council



Ajith Juwan, BSc. Eng., MSc, C.Eng. (IESL), MIEAust

Ajith graduated from University of Peradeniya in Electrical and Electronic Engineering in 1994 and completed a Master's degree in 2002 from University of Moratuwa. He is also a corporate member of IESL. Ajith is the founder of SLESA and currently holding the position as The President of SLESA while leading the team in many different portfolios.



Wineya Wijesinghe, BSc. Eng., MSc

Wineya graduated from University of Peradeniya in Electrical and Electronic Engineering in 1990 and completed a Master's degree in Computer and Communication from National University of Singapore. Wineya is one of the leading members of SLESA since day one and contributed actively in many different portfolios.



Guna Hewa, BSc. Eng., MSc, PhD, MIEAust

Guna graduated from University of Moratuwa in Civil Engineering in 1994 and completed a Master's degree in hydrology from National University of Ireland Galway. She also completed Doctor of Philosophy in hydrology from University of Melbourne. Guna is a one of the leading members of SLESA since day one and her key roles involve the student engagement and the preparation of the constitution of SLESA.



Subash Kodituwakku, BSc. Eng., MSc, MIEAust

Subash graduated from University of Moratuwa in Civil Engineering in 2002 and completed a Master's degree in Infrastructure Engineering from Monash University. He is an experienced civil engineer in the construction industry. Subash is also a founding member and currently holding the position as The Secretary of SLESA while contributing in many different portfolios.



Chrishanthi Weerawarna, BSc. Eng., MBA

Chrishanthi graduated from University of Moratuwa in Civil Engineering in 1991 and completed a Quality Management Diploma from Sri Lanka Standards Institution. She also completed a MBA from University of Colombo. Chrishanthi has done an outstanding job of launching of SLESA and her key roles involve the event coordination. Currently she is holding the position as the Treasurer of SLESA.



Dinesh Ratnayake, BSc. Eng., MBA, C.Eng. (IESL), MIEAust

Dinesh graduated from University of Peradeniya in Civil Engineering in 2002 and completed a MBA in Infrastructure in 2008 from University of Moratuwa. He is also a corporate member of IESL became a Chartered Engineer in 2008. Currently he is a PhD candidate at University of South Australia while working in Flood and Hydrology Industry. Dinesh is one of the leading members of SLESA since day one and contributed actively in many different portfolios specially leading the student engagement subcommittee.



Ravindra Rathnaweerage, BSc. Eng.

Ravindra graduated from University of Peradeniya in Electrical and Electronic Engineering in 2007 and currently working as a Network Engineer. Ravindra is one of the leading member of SLESA and contributed actively in many different portfolios.

Our Team - The Council



Saarathi Perera, BSc. Eng., MBA, MIEAust

Saarathi graduated from University of Peradeniya in 2006 and completed MBA in 2011 in Management of Technology. Saarathi is one of the leading members of the SLESA and currently providing a valuable support to The Secretary while contributing and engaging actively in event coordination. Her contribution in the LOGO design is commendable.



Sashila Asgiriyage, BSc. Eng., MIEAust CPEng, MStructE, CEng (UK)

Sashila graduated from University of Ruhuna in Civil Engineering in 2004. He is a chartered professional engineer in structural engineering. Sashila is one of the leading members of SLESA since day one and contributed in many different ways especially in preparation of logo.



Raneesh Gulawita, BSc. Eng., MIEAust

Raneesh graduated from University of Moratuwa in Mechanical Engineering in 2004 and currently working as a signal design engineer at Australian Rail Track Corporation. Raneesh is a prominent member of SLESA and played a key role in event coordination.



Shan Prasad, BSc. Eng., MSc, C.Eng. (IESL), MIEAust

Shan graduated from University of Peradeniya in Electrical and Electronic Engineering in 1996 and completed a Master's degree in Electrical Engineering in 2004 from University of Moratuwa. He is also a corporate member of IESL. Shan is a notable member of SLESA and played the key role in preparing of the constitution of SLESA.



Gayani Fernando, BSc. Eng., MPhil

Gayani graduated from the University of Moratuwa in 1996 and also has a Master of Philosophy from the University of Hong Kong. She is an experienced researcher and passionate engineering educator. Gayani is another active member of SLESA. She led the team in organising our inaugural get together in 2019.



Heshan Pathirana, BSc. Eng., MIEAust

Heshan graduated from University of Moratuwa in Mechanical Engineering in 1998 and currently working as an ERP Implementation Consultant at Pronto Software. Heshan played a prominent role in establishing the SLESA and contributed actively in many different portfolios.



Indunil Lankathilaka, BSc. Eng., MSc, MIEAust

Indunil graduated from University of Peradeniya in Chemical Engineering in 1996 and completed a MBA in 2017 from University of South Australia. He contributed to SLESA in many capacities.



Eshana Wijesinghe, BSc. Eng., MSc, MIEAust

Eshana graduated from University of Adelaide in Mechanical and Aerospace Engineering in 2015 and completed a Master's degree in 2018. He is currently working as a graduate Engineer at BHP. Eshana is a prominent member of SLESA and played a key role in student engagement.

Flashback of our first year 2019

We had an exciting launch in September 2018. Since then, our dedicated members of The Council contributed in numerous ways to pave the way for SLESA in four significant areas; social events and community engagement, student engagements and support services, communication and the constitution. We were able to finalise the constitution and applied for registration as an incorporated association. The communication established and streamlined the communication among the council members and all the members in a wider group, launched SLESA facebook closed group for social interactions within the members. Overall we had a successful year packed with several activities that supported and engaged the engineering community in South Australia.

Social Events and Community Engagements

Our inaugural annual family get together was successfully held on 16th of February at the East Torrens Primary school with more than 75% SLESA members and their family members actively participating in various fun-filled activities throughout the evening. It was a well received evening which offered perfect opportunity for our members to revive old friendships and forge new friendships with likeminded people in relaxed environment.

We also sponsored and implemented two well received elle games at Sinhala and Tamil New Year Celebrations in 2019. It was a privilege for SLESA as an emerging professional organisation representing Sri Lankan Engineers in South Australia to engage with wider Sri Lankan community in such a capacity. We are also actively involved with Adelaide Sri Lankan Students' Association by providing sponsorships for their events.



Flashback of our first year 2019

Student Engagement

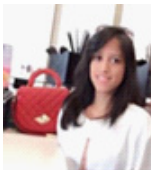
Having studied and analysed the outcomes of the brainstorming session conducted during the launch of SLESA in September 2018, the student engagement team was formed to support Sri Lankan engineering students currently live in South Australia. We are now communicating with 26 engineering students; 17 of them are Student Members of SLESA. Students were given opportunities to network with Sri Lankan engineers and interact with fellow Sri Lankans. The pizza lunch at University of South Australia (UniSA) in March 2019 and Elle match during Sri Lankan New Year celebrations in April 2019 are such opportunities organised by SLESA.

Six civil engineering students representing UniSA and the University of Adelaide approached SLESA regarding their placement needs. We liaised with two engineering organisations in SA and organised industry placement opportunities for five students. Savini Ratnayake and Udayakumar Aravinthan of UniSA completed their placements in Asset Management at Town of Gawler. Shannon Weerakkodi, Venusha Halahakoon of Adelaide University and Senthuran Jeyakumar of UniSA completed their placements at Samaras Structural Engineers (SSE). SLESA members; Wasantha Kaludewa of Town of Gawler and Subhash Kodithuwakku of SSE were instrumental in securing these places in their organisations. The students highly valued their experience and expressed their gratitude as below.



SSE gave me a great opportunity to get experience in project management and analysis of welding schematics. I appreciate support given by SLESA and the friendly team of SSE for accommodating and mentoring me during the period.

- Shannon Weerakkodi - Adelaide Uni



I was able to gain valuable experience on asset management and road & drainage designs during my placement at Town of Gawler. As an international student, I wouldn't be able to get this opportunity without the support of SLESA. I also appreciate Mr. Wasantha Kaludewa and his team at Town of Gawler for their invaluable support during the period.

- Savini Ratnayake - UniSA



UniSA staff members attached to SLESA helped me a lot to obtain the internship at SSE. I should extend my gratitude to Subash Kodithuwakku at SSE too. During this period I was able to gain knowledge in structural codes, standards and IT.

- Senthuran Jeyakumar - UniSA

Plan for 2020 and beyond

Having completed the critical and decisive first year successfully, the platform is set for the incoming council to expand our existing services in various aspects, with the expectation of enhancing existing or starting new projects to fulfill our objectives. The main focus will be given to the following four categories but not limited to them and open for new ideas and suggestions.

Professional development and Networking opportunities

A key objective of SLESA is to aid fellow peers to reach new career heights by organizing professional development programs. On a professional level, continuous learning is about further expanding our skill set in response to a changing environment. The focus areas are;

- Engagement/knowledge workshops to obtain Chartered status in collaboration with Engineers Australia
- Presentations and share expertise knowledge through Guest speakers
- Workshops for improving presentation skills like Toastmasters club
- Field visits of Engineering Interests
- Quiz nights

Social Events

We would love to engage with the families of our members, and we hope to organise some events to further strengthen the community spirit with the following events in the upcoming year.

- Annual Family Get together
- Annual Engineers night
- Public fundraising events

Student Engagement for Engineering undergraduates

As per our main objectives it has always been our passion to act as a platform and be a pillar to jumpstart their careers in the field. With this in mind, we will expand on the following areas.

- Organise welcome/information gatherings for newcomers
- Organise the undergraduate internships
- Annual SLESA inter-university cricket tournament

SLESA Helping hand for new migrant Engineers

It is always a challenging experience to settle down in Australia as a new migrant. Another focus area of SLESA is to provide required assistance and support and the necessary means to new migrating engineers.

Our Members

Members

Membership No.	Name
EM0001	Ajith Juwan
EM0002	Wineya Wijesinghe
EM0003	Guna Hewa
EM0004	Subash Kodituwakku
EM0005	Sashila Asgiriya
EM0006	Dinesh Ratnayake
EM0007	Chrishanthi Weerawarna
EM0008	Saarathi Perera
EM0009	Shan Prasad
EM0010	Heshan Pathirana
EM0011	Raneesh Gulawita
EM0012	Ravi Rathnaweera
EM0013	Gayani Fernando
EM0014	Eshana Wijesinghe
EM0015	Indunil Lankathilaka
EM0016	Subhashini Wella Hewage
EM0017	Chathu Asgiriya
EM0018	Ishari Jagoda
EM0019	Sithara Walpita Gamage
EM0020	Ganeska Jayasinghe
EM0021	Malka Ranawaka
EM0022	Yasodinee Wimalasiri
EM0023	Sanath Abeygunasekara
EM0024	Udaya Malalagama
EM0025	Theja Malalagama
EM0026	Gemunu Dharmasena
EM0027	Thusitha Wedamuni
EM0028	Asanka Perera
EM0029	Amila Wagaarachchige
EM0030	Devinda Perera
EM0031	Vidarshika Jayawardana
EM0032	Pramoda Dissanayake
EM0033	Yashodena Abeygunawardena
EM0034	Deepal Punchihewa
EM0035	Indika Jayaratne
EM0036	Kalana Patuwatha Withanage
EM0037	Sheshan Rajapakse
EM0038	Singithi De Silva
EM0039	Pradeeptha Fernando
EM0040	DC Bandara
EM0041	Eshan Jayathilaka
EM0042	Irusha Jayawardana

Our Members

Membership No.	Name
EM0043	Ajith Seneviratne
EM0044	Darshana Hewage
EM0045	Ravindra Athukorala
EM0046	Lakshitha Hasith Pathirana
EM0047	Ridma Kondasinghe
EM0048	Manoj Illangasooriya
EM0049	Banduka Gunasekara
EM0050	Chanuka Ratnayake
EM0051	Tidasa Tennakoon
EM0052	Dimuthu Karunasekara
EM0053	Dakshitha Kankanamage
EM0054	Prabath Wijesinghe
EM0055	Pasindu Fernando
EM0056	Royce Mariadas
EM0057	Ruwan Jayaneththi
EM0058	Nadikani Vitharana
EM0059	Nara Somaratne
EM0060	Thanussh Packiyarajah
EM0061	Jonathan Aiyadorai
EM0062	Wasantha Kaludewa

Student Members

Membership No.	Name
SM0001	Hashan Somawardane
SM0002	Indu Kirihene
SM0003	Rudi Udagampala
SM0004	Yasasa Tennakoon
SM0005	Aravinth Udayakumar
SM0006	Eshani Fernando
SM0007	Hasitha Senaratne
SM0008	Jeyakumar Senthuran
SM0009	Kevin Perera
SM0010	Odayar Koen
SM0011	Ovini Perera
SM0012	Saju Halahakoon
SM0013	Shamara Kuruppu Mudiyansele
SM0014	Shamitha Pathirana
SM0015	Binu Sumanadasa
SM0016	Manera Karunaratne
SM0017	Shammika Rajapakshe Mudiyansele
SM0018	Savini Ratnayake
SM0019	Dulan Gamage
SM0020	Vageesha Amarasena

